



smoke vents
mcr
S-THERM



We provide safety

NATURAL SMOKE EXHAUST SYSTEM

Following recent changes relating to fire safety requirements in the construction market, „MERCOR” S.A. are expanding our range of smoke exhaust vents, with further products which are characterised by an increased thermal insulation and at the same time have a modular structure. **mcr S-THERM** are innovative smoke vents that will comply with current and future thermal parameter requirements.

The main design consideration for this product range was to eliminate the thermal bridges. By removing them, we have created a product with a very advantageous heat transfer coefficient, which is an extremely important parameter in the modern construction industry.

Also, since the elements of the vent are not welded, the production time is shorter. Customers may find it bene-

ficial that **mcr S-THERM** vent has no joints that need to be protected which results in reducing risk of corrosion.

mcr S-THERM is a vent made of chamber aluminium profiles with thermal spacers. It has a modular construction, enabling the installation process to be divided into stages. We deliver it to the site as separate elements that are ready for assembling. These include a leaf, frame, base and an actuating mechanism. With the innovative design of the hinge, the leaf is easy to install and the vent is durable.

The available variants of the steel base of the **mcr S-THERM** vent are straight, skew or designed for the existing plinth.



Mercor Group's mission is to deliver safety to building users by providing them with comprehensive fire protection. For over 35 years, we have been offering our business partners, at every stage of the investment process, products and services they can always trust. As a leader of modern technologies in the fire protection industry, we introduce new solutions that are ahead of the norm, and are additionally characterized by high quality and aesthetic workmanship.

smoke vents
mcr
S-THERM

FILLINGS FOR **mcr S-THERM** SMOKE VENT



MULTI-CHAMBER POLYCARBONATE PLATE

PCA 10, PCA 16, PCA 20, PCA 25



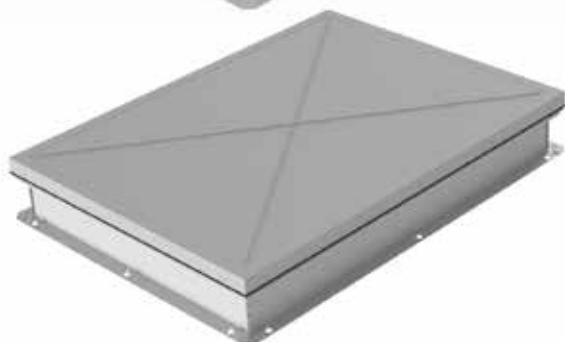
SET:

- **MULTI-CHAMBER
POLYCARBONATE PLATE**

PCA 10, PCA 16, PCA 20, PCA 25

DOMES

POLYCARBONATE / ACRYLIC



SANDWICH PANEL

ALU + XPS + ALU / ALU + PCA

mcr S-THERM ADVANTAGES

FUNCTION

Smoke vent, ventilation vent.



QUALITY

Innovative aluminum profile system provides exceptional strength. The multi-level gasket system guarantees the tightness of U_{rc} penetration.



AESTHETICS

High-quality products made of plastic and aluminium. The colours of the product harmonise with the finish elements of the building.



DESIGN

Many variants of the base, panels and actuators fulfil individual needs of designers and users.



HEAT

Excellent thermal performance, no thermal bridges. Meets all future U_{rc} heat transfer requirements.



MODULAR DESIGN

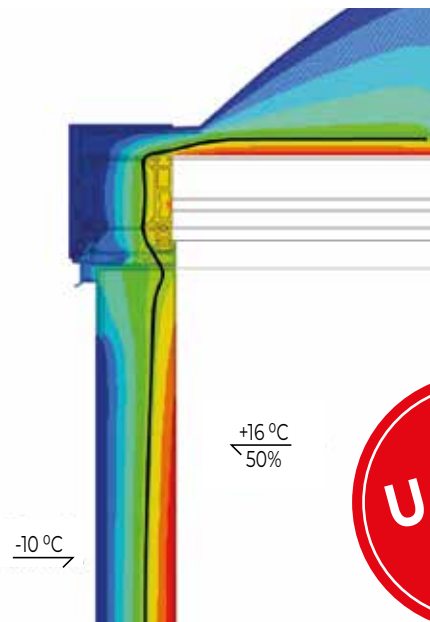
Flexible lead times.
Easy installation and roofing works.

ENERGY EFFICIENCY

ISOTHERMS FOR mcr S-THERM PRODUCTS

The research carried out on the basis of the current standards confirmed a uniform shape of the isotherms for the profiles of the **mcr S-THERM** product family.

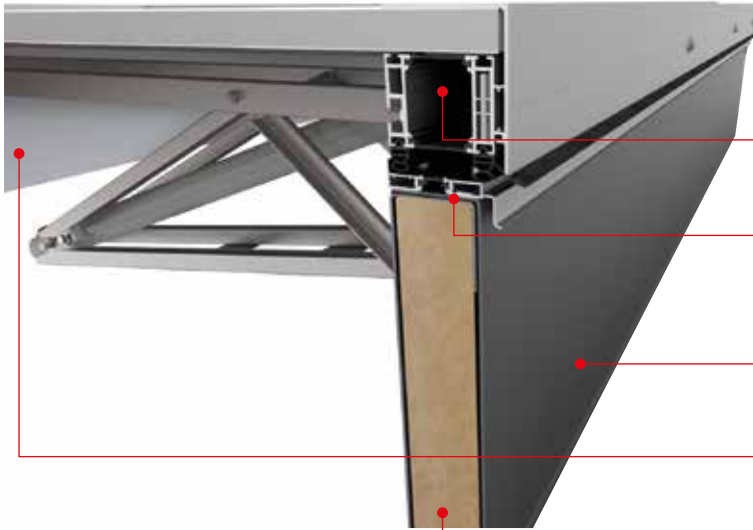
With such energy efficiency of the components, we can offer vents **without thermal bridges**. The dew point isotherm $5.5\text{ }^{\circ}\text{C}$ extends entirely within the structure of the vent.



$U_{rc} = 0.9$
 $\text{W/m}^2\text{K}$



mcr S-THERM FEATURES



NO THERMAL BRIDGES

Reduction of water vapour condensation.

ENVIRONMENT-FRIENDLY PRODUCTION

No welded joints mean
— a low energy consumption.

MODULAR DESIGN

Ergonomics of work during assembly and transport.

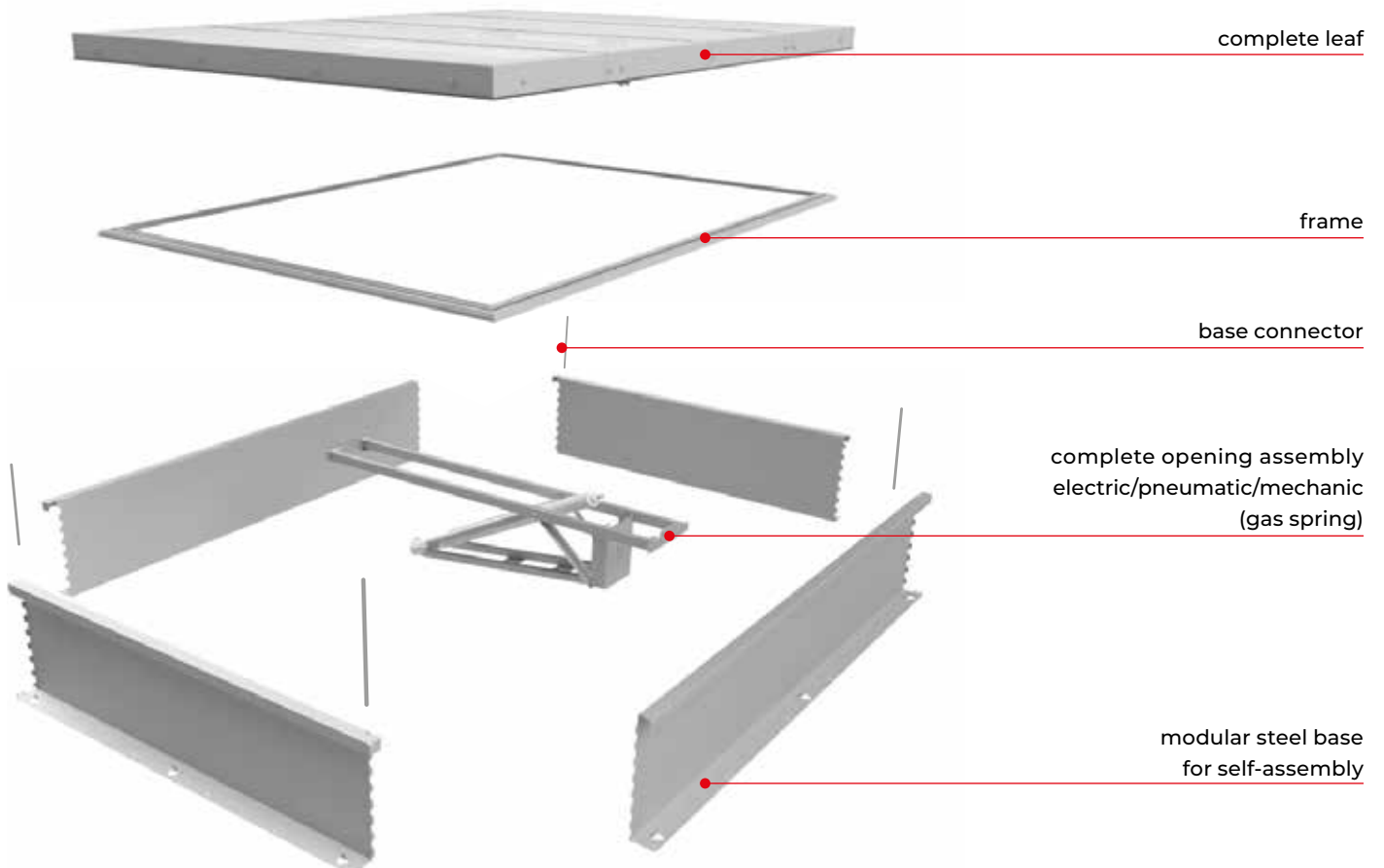
AESTHETIC WORKMANSHIP

Use of extruded aluminium profiles and the choice
of powder-painted elements.

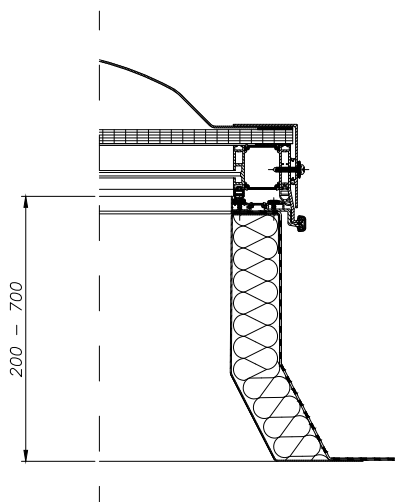
EASY REPLACEMENT OF THE VENT PARTS

Change of the leaf-filling, e.g. its thickness, type or colour.

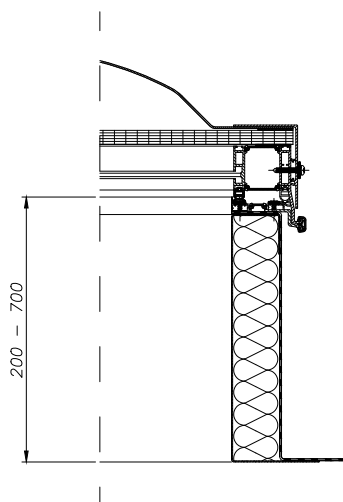
mcr S-THERM MODULAR DESIGN OF SMOKE VENT



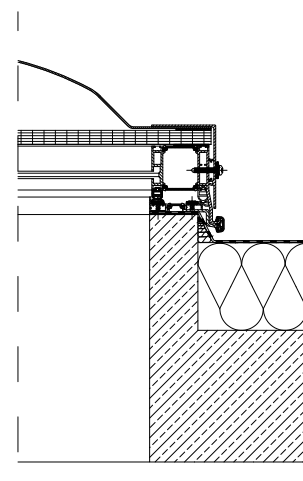
BASE OF mcr S-THERM SMOKE VENT



Steel base
skew type NC-A



Steel base
straight type C/E



Base on the plinth,
e.g. made of reinforced concrete

mcr S-THERM SMOKE VENT CLASSIFICATION ACCORDING TO EN 12101-2 STANDARD

100 [cm] x 100 [cm]	Min. nominal size
180 [cm] x 250 [cm]	Max. nominal size
SL250 ÷ SL950	Snow load class
WL750 ÷ WL1500	Wind load class
B300, B600	High temperature resistance class
Re50 lub Re100	Reliability
E, F	Reaction to fire class for other components
60 [s]	Maximum vent opening time to working position
140° ÷ 160°	Vent opening angle



smoke vents
mcr
S-THERM

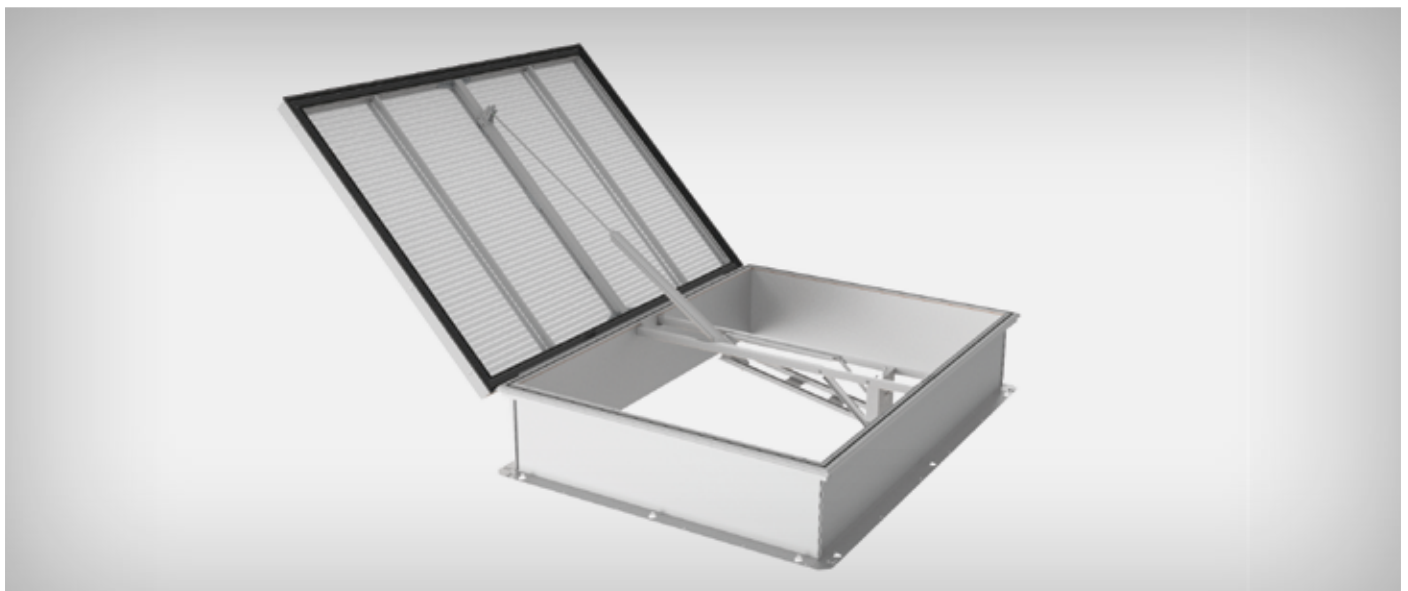


EXAMPLE mcr S-THERM SMOKE VENT PARAMETERS | with straight base, type C/E

Vent type	Nominal dimension (*)	Base min. h = 500 mm			Base min. h = 300 mm			Approx. mass (**) [kg]
		Active area A_a [m ²]			Active area A_a [m ²]			
	A x B [mm]	Standard Without wind and inlet deflectors	With wind deflectors	With wind and inlet deflectors	Standard Without wind and inlet deflectors	With wind deflectors	With wind and inlet deflectors	
C100	1000 x 1000	0.72	0.71	0.79	0.64	0.67	0.75	88
C120	1200 x 1200	0.98	1.01	1.14	0.85	0.95	1.09	101
C140	1400 x 1400	1.28	1.35	1.57	1.09	1.27	1.51	124
C150	1500 x 1500	1.43	1.55	1.80	1.22	1.46	1.73	131
C180	1800 x 1800	1.95	2.20	2.62	1.64	2.11	2.49	161
E150/250	1500 x 2500	2.27	2.55	3.00	1.84	2.44	2.89	163
E180/250	1800 x 2500	2.63	3.02	3.65	2.14	2.88	3.51	185

(*) Smoke vents can be made with intermediate dimensions, between the values in the table. The value of active smoke exhaust area for those dimensions is determined by linear interpolation.

(**) Estimated weight specified for smoke vent with uninsulated base of height 500 mm with wind and inlet deflectors of standard configuration with multi-chamber polycarbonate plate of 16 mm thickness and pneumatic control.



EXAMPLE MCR S-THERM SMOKE VENT PARAMETERS | with skew base, type NG-A

Vent type	Nominal dimension (*)	Base min. h = 500 mm	Base min. h = 300 mm	Approx. mass (**)
		Active area A _a [m ²]	Active area A _a [m ²]	
	A x B [mm]	With wind deflectors	With wind deflectors	[kg]
NG-A 110/110	1100 x 1100	0.82	0.81	88
NG-A 120/120	1200 x 1200	0.99	0.96	90
NG-A 140/140	1400 x 1400	1.39	1.35	102
NG-A 150/150	1500 x 1500	1.62	1.50	118
NG-A 150/250	1500 x 2500	2.78	2.66	148
NG-A 180/180	1800 x 1800	2.37	2.30	147
NG-A 180/250	1800 x 2500	3.38	3.24	168
NG-A 190/260	1900 x 2600	3.70	3.55	175

(*) Smoke vents can be made with intermediate dimensions, between the values in the table. The value of active smoke exhaust area for those dimensions is determined by linear interpolation.

(**) Estimated weight specified for smoke vent with uninsulated base of height 500 mm with wind and inlet deflectors of standard configuration with multi-chamber polycarbonate plate of 16 mm thickness and pneumatic control.

HEAT TRANSFER COEFFICIENT U_{rc} OF mcr S-THERM SMOKE VENT

Vent type	Steel base h = 350 mm	Steel base h = 500 mm	Steel base h = 700 mm
C 100/100	1.7 ÷ 1.1	1.4 ÷ 1.0	1.3 ÷ 0.9
C 120/120	1.7 ÷ 1.1	1.5 ÷ 1.0	1.4 ÷ 0.9
C 140/140	1.8 ÷ 1.1	1.6 ÷ 1.0	1.4 ÷ 0.9
C 150/150	1.8 ÷ 1.1	1.6 ÷ 1.0	1.4 ÷ 0.9
C 180/180	1.8 ÷ 1.1	1.6 ÷ 1.0	1.5 ÷ 0.9
C 150/250	1.8 ÷ 1.1	1.6 ÷ 1.0	1.5 ÷ 0.9
C180/250	1.8 ÷ 1.1	1.7 ÷ 1.0	1.6 ÷ 0.9

U_{rc} coefficient is given in a range depending on the filling used in the vent leaf and the base.

The highest U_{rc} value – determined for 10 mm PCA leaf-filling and base thermally insulated with 50 mm mineral wool.

The lowest U_{rc} value – determined for 25 mm PCA leaf-filling and base thermally insulated with a 50 mm PIR panel.





„MERCOR” S. A.
ul. Grzegorza z Sanoka 2
80-408 Gdańsk, Poland
tel. + 48 58 341 42 45
export@mercors.com.pl

MERCOR UKRAINE SP. Z O.O.
Ukraine

www.mercor.com.ua

📍 Scheptyckich 26
 📍 79-016 Lviv
 ☎ +380 32 240 34 47
 ☎ +380 32 240 34 07
 ✉ info@mercors.com.ua

MERCOR FIRE PROTECTION SYSTEMS S.C. S.R.L.

Romania

www.mercor.ro

📍 Drum Centura Chitila
 📍 Mogosoaia, no 3, floor 4
 📍 Oras Chitila, Ilfov RO-077045
 ☎ +40 371 324 182
 ☎ +40 372 877 070
 ✉ romania@mercors.com.pl

MERCOR TECRESA

Spain

Parque Tecnológico Legatec.

www.mercortecresa.com

📍 C/ Margarita Salas nº 6
 📍 28919 Leganés (Madrid)
 ☎ +34 91 428 22 60
 ☎ +34 91 428 22 62
 ✉ info@mercortecresa.com

MERCOR SLOVAKIA S.R.O.

Slovakia

www.mercor-slovakia.sk

📍 Galvaniho 7/D
 📍 821 04 Bratislava
 ☎ +421 2 2062 0040
 ☎ +421 2 2062 0049
 ✉ mercor@mercorslovakia.sk

MERCOR CZECH REPUBLIC S.R.O.

Czech Republic

www.mercor-czech.cz

📍 Letní 1122/1
 📍 721 00 Ostrava-Svinov
 ☎ +420 597 317 665
 ✉ mercor@mercors-czech.cz

MERCOR - DUNAMENTI

TŰZVÉDELEM ZRT.

Hungary

www.dunamenti.hu

📍 Nemeskéri Kiss Miklós utca 39
 📍 2131 Cöd
 ☎ +36 30 919-0542
 ✉ godcenter@dunamenti.hu

MERCOR FIRE PROTECTION UK LTD

England

www.mercor-uk.co.uk

📍 Unit P(10), Heywood Distribution Park,
 📍 Pilsworth Road, Heywood, OL10 2TT
 ☎ +44 (0) 0161 3598309
 ✉ enquiries@mercors-fp.co.uk



European Funds
 Smart Growth

European Union

European Regional Development Fund



The product was developed within the framework of an innovative project entitled:

“Comprehensive solutions in the scope of passive fire protection of buildings including the development of display line”

subsidized with European funds.



Read more about our smoke exhaust vents mcr S-THERM

www.mercor.com.pl/en



CONTINUOUS ROOFLIGHT WITH SMOKE VENTS



SMOKE AND VENTILATION VENTS



LOUVERED VENTS



SMOKE CURTAINS



SMOKE EXHAUST WINDOWS



ROOF HATCHES



FIXED SKYLIGHTS



CONTROL SYSTEMS



STAIRCASE SMOKE EXHAUST SYSTEMS

